

RIAS Lighthouse Award
Staszek Stuart-Thompson
Submission 2009

Staszek Stuart-Thompson
University of Edinburgh
4th Year
Lighthouse Award



“The fire confined to the fireplace was no doubt for man the first object of reverie, the invitation to repose... It leads to a very special kind of attention which has nothing in common with the attention involved in watching or observing. Very rarely is it utilised for any other kind of contemplation”

“Every Building must be designed and constructed in such a way that in the event of an outbreak of fire in a neighbouring building, the spread of fire to the building is inhibited. The Roof of a building, including any rooflights, should have a low vulnerability if not more than 6m from the boundary.”

This proposal for a residential and retail development in Edinburgh’s New Town dwells on the phenomenology of Fire, through a study of its regulatory context in building. Three dwellings and a bakery are organised around four chimneys. The chimneys centralise the vertical circulation and provision of facilities for each building. The chimneys are located 6 metres in from the site boundary. The perimeter of the site is formed by a protective, invulnerable wall, controlling limited glimpses between inside and out. The interior opens up to form an intimate courtyard, framed by lightweight and vulnerable walls. At night, the flickering of domestic lights in the courtyard form a campfire for the street.

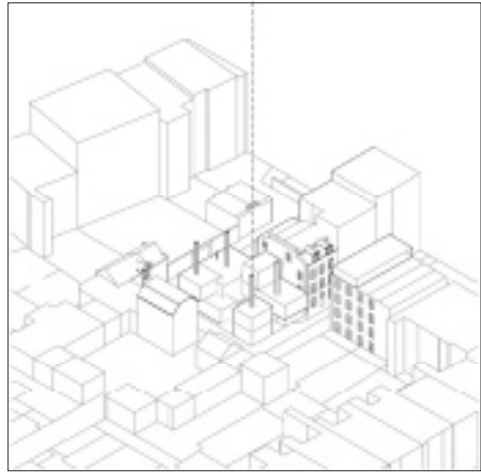
.....

A sustainable form of architectural design must take account of the social and economic issues as well as those of the environment. In my proposal the fireplaces in my proposal provide integrated facilities designed to make home heating (in which grey water recycling plays a part) and cooking more efficient. Fire’s utilitarian function is reinvigorated. Technically, the thermal mass and insulation assists the building’s environmental robustness and with locally sourced brick and timber materials, embodied energy aims to be kept low.

The social scale is also important in the inner city where an an acknowledged proximity and shared courtyard help improve interaction and a sense of community. In order to strive for a more sustainable future, a shared appreciation of how we live as individuals within a wider context seems essential.

Fireside Manners

3 Dwellings and a Bakery
Northumberland Place, Edinburgh



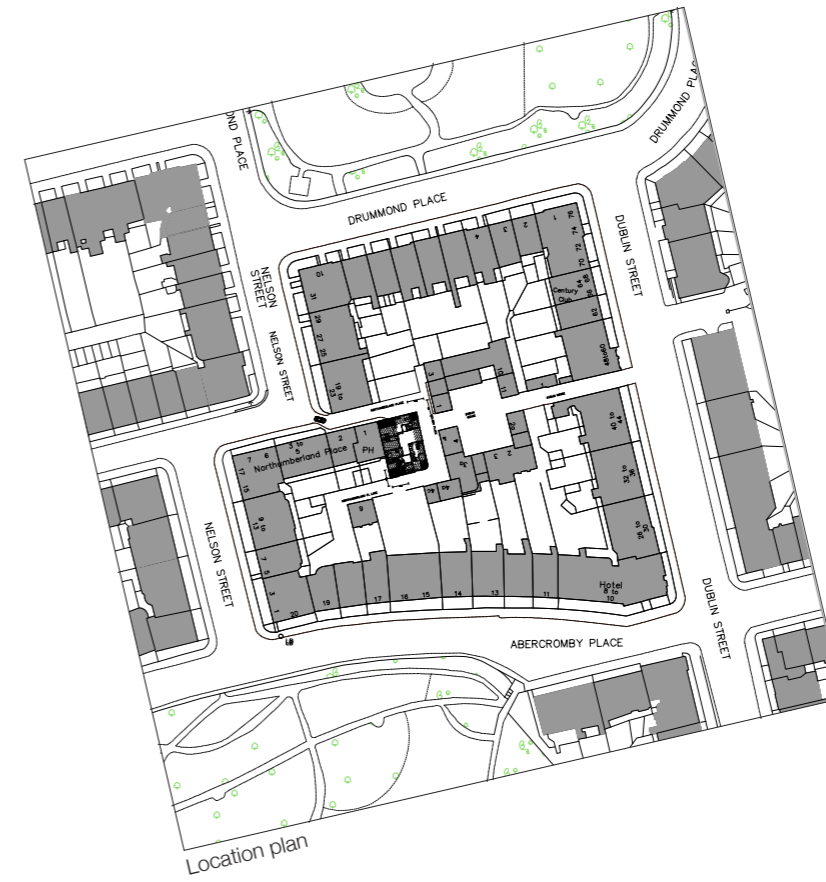
Chimney location diagram

Scottish Building Standards Agency

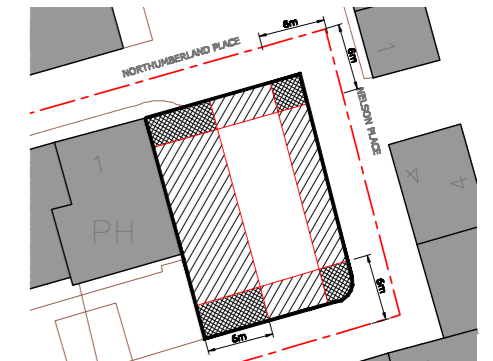
FIRE

Regulation 2.8.1: Spread from Neighbouring Buildings

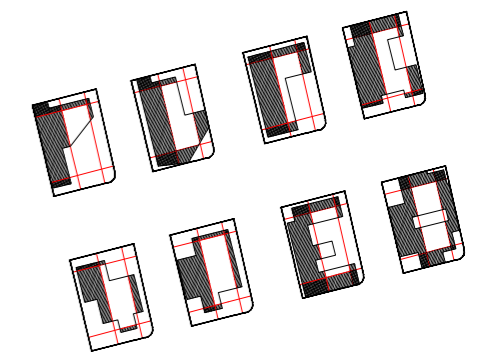
Every Building must be designed and constructed in such a way that in the event of an outbreak of fire in a neighbouring building, the spread of fire to the building is inhibited. The Roof of a building, including any rooflights, should have a low vulnerability if not more than 6m from the boundary



Location plan



6 metre rule and boundary study



- a. entrance foyer
- b. garage
- c. courtyard
- d. living space
- e. dining
- f. bakery counter
- g. cafe seating
- h. kitchen
- i. bathroom
- j. store
- k. bedroom
- l. cafe toilets
- m. wash up
- n. still room
- o. cleaning cupboard
- p. ovens
- q. bakery/cafe kitchen
- r. bakery/cafe office/staff room

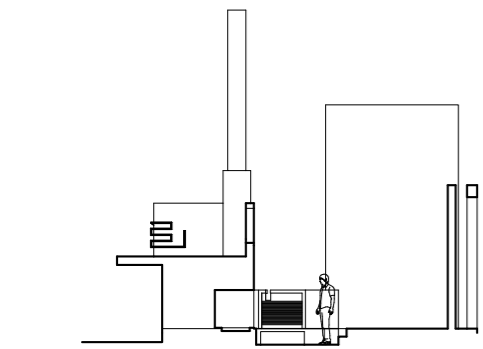
Fireside Manners

Gaston Bachelard
The Psychoanalysis of Fire

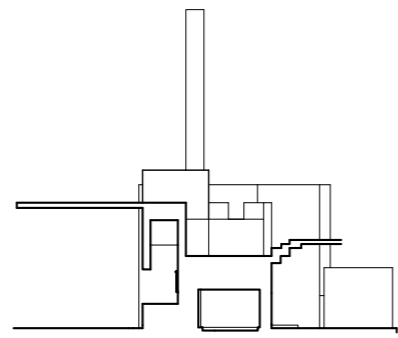
The fire confined to the fireplace was no doubt for man the first object of reverie, the invitation to repose... It leads to a very special kind of attention which has nothing in common with the attention involved in watching or observing. Very rarely is it utilised for any other kind of contemplation



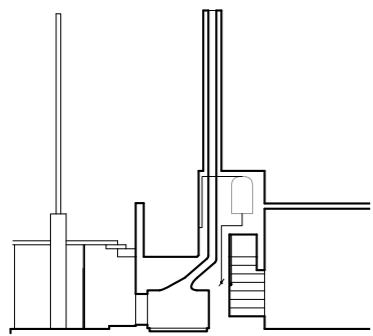
Renders showing entry sequence; courtyard, log-store, fire, stair, kitchen



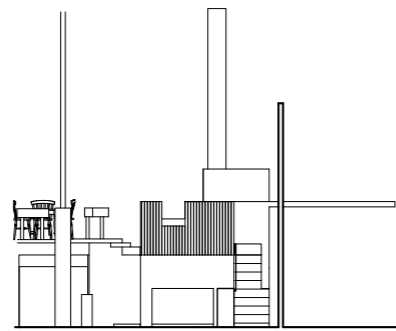
Section aa



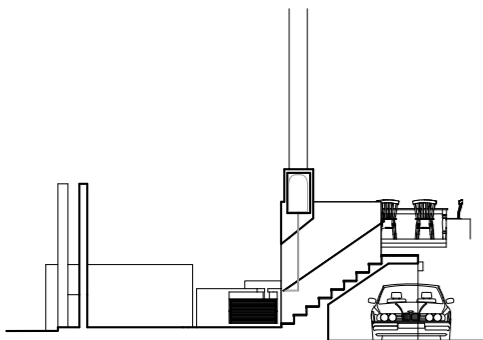
Section bb



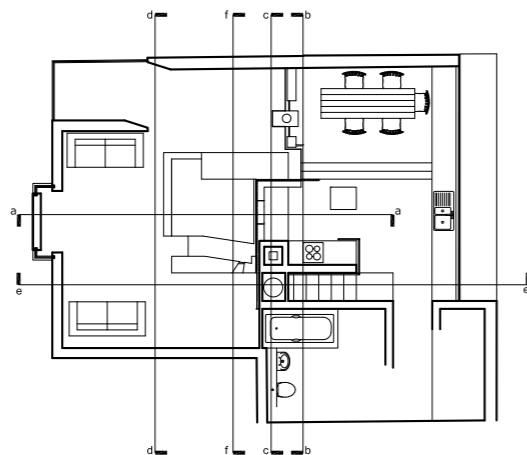
Section cc



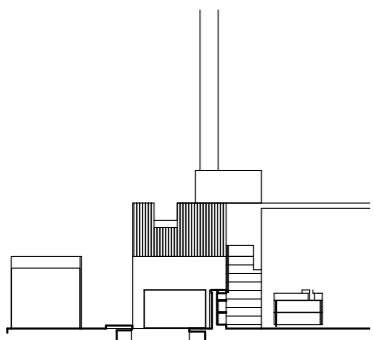
Section dd



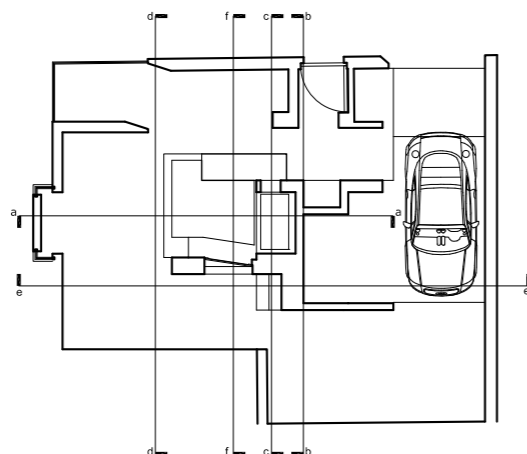
Section ee



Plan - First

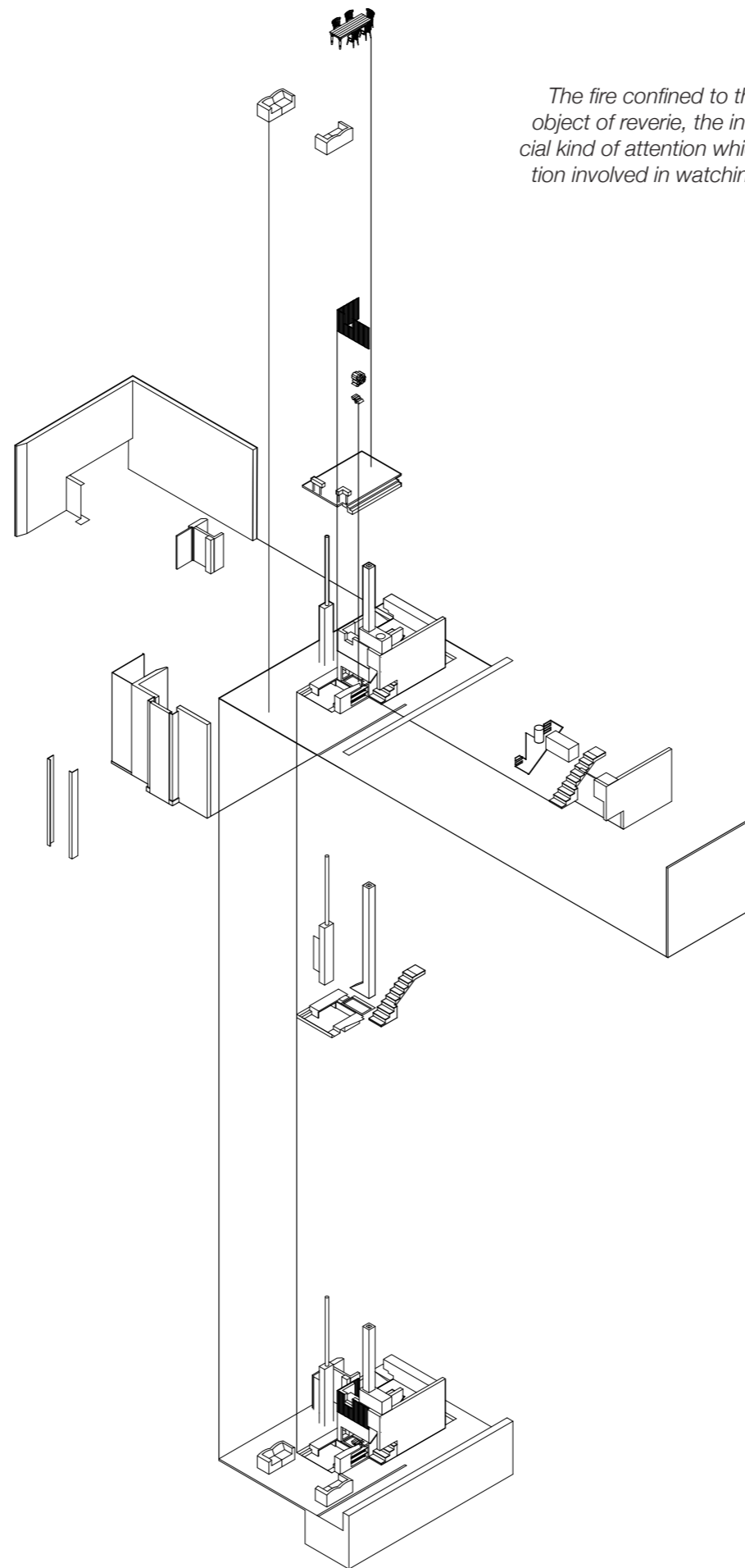


Section ff

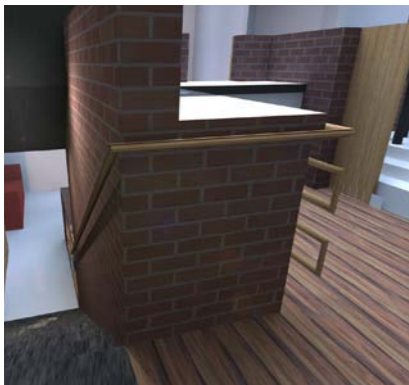


Plan - Ground

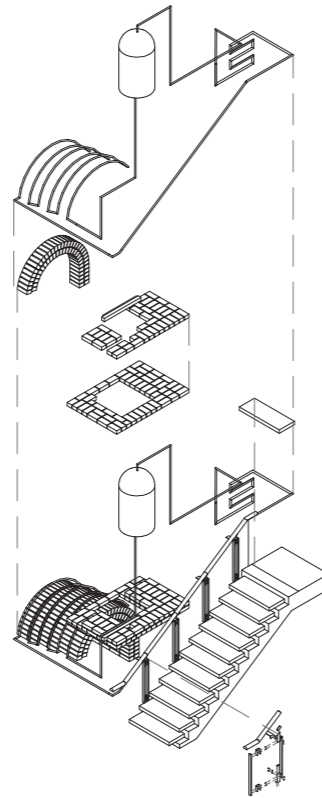
Sections, plans and axonometric of typical chimney / fire / stair / kitchen arrangement



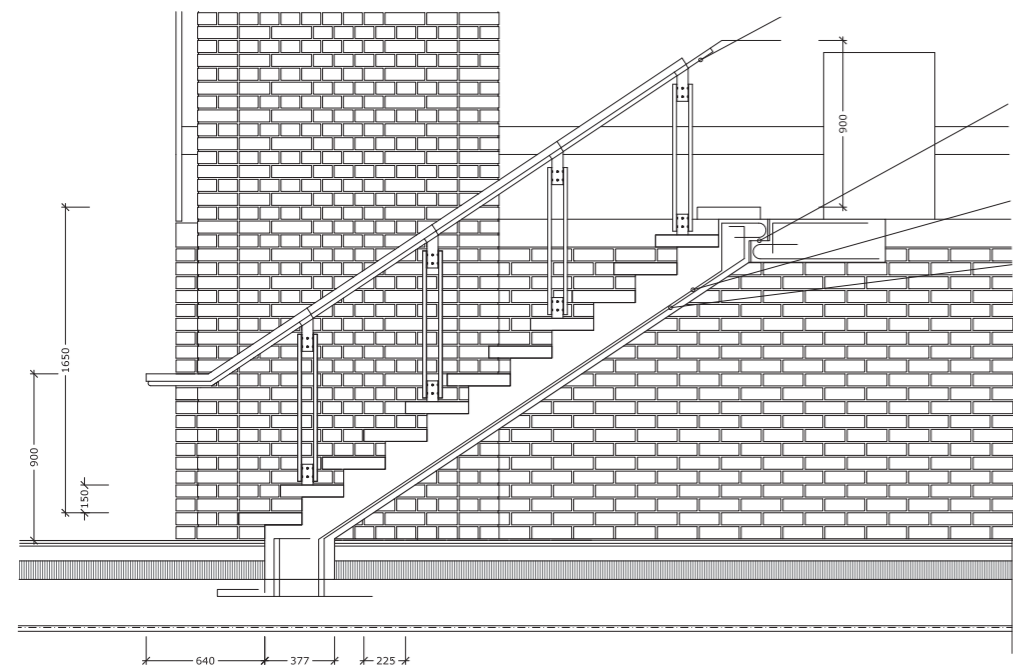
Fireside Manners



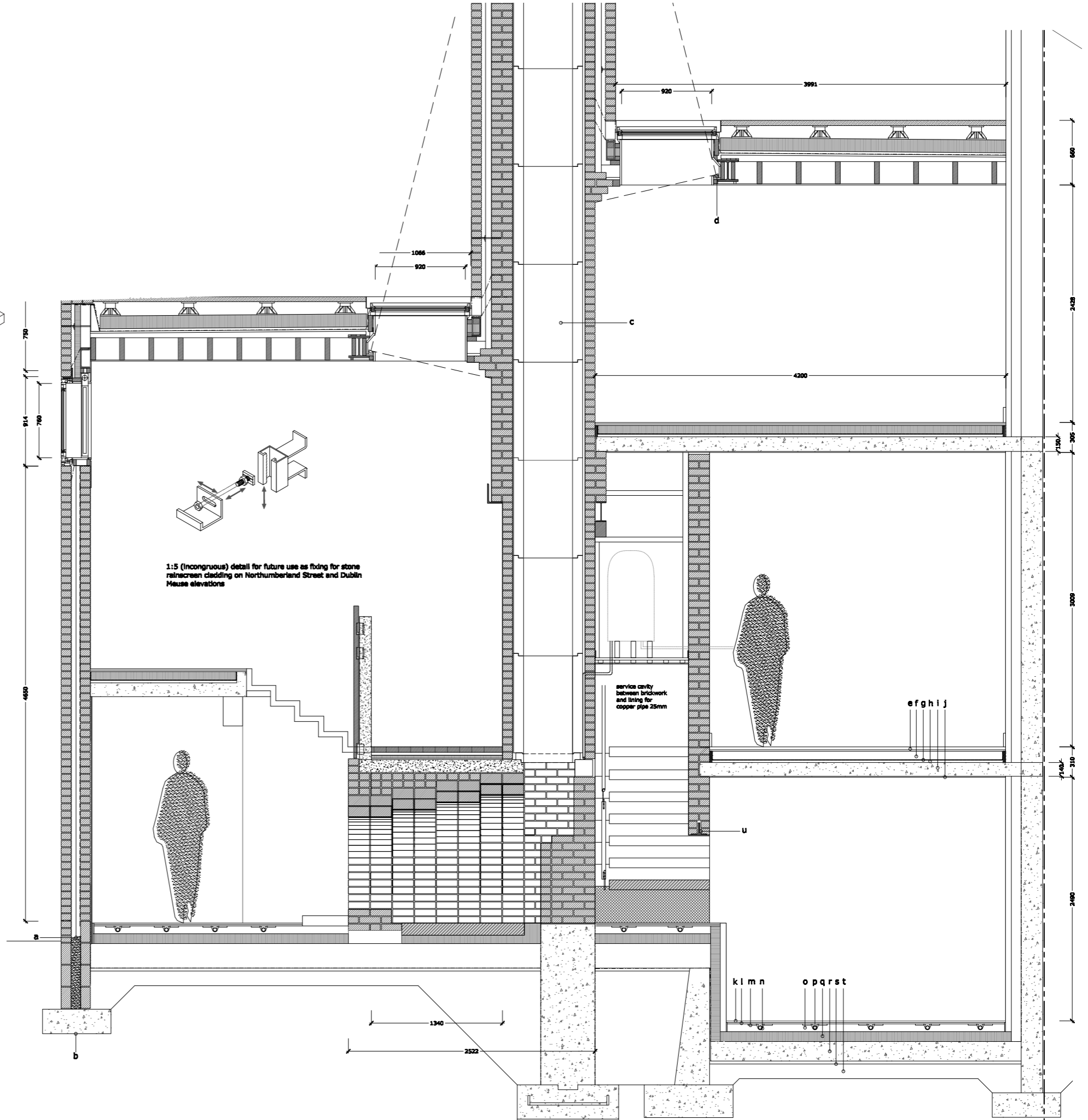
Kitchen, fireplace and stair



- a. lean mix concrete backfill
- b. concrete pad foundation
- c. 600 mm I/d 1000mm high rebated liner 706mm o/d (S-10060 Isokern)
- d. spot light
- f. screed
- e. wood flooring
- g. separating layer - 1mm plastic sheet
- h. Insulation
- i. concrete slab
- j. slab soffit plastered
- u. 127 x 75 x 8 steel angles cantilevered from brickwork
- k. stone slab floor covering
- l. mortar bed
- m. heat distribution plate
- n. heat conducting plate
- o. screed with underfloor heating
- p. floor heating pipe
- q. thermal insulation
- r. concrete slab
- s. sand blinding
- t. compacted hardcore

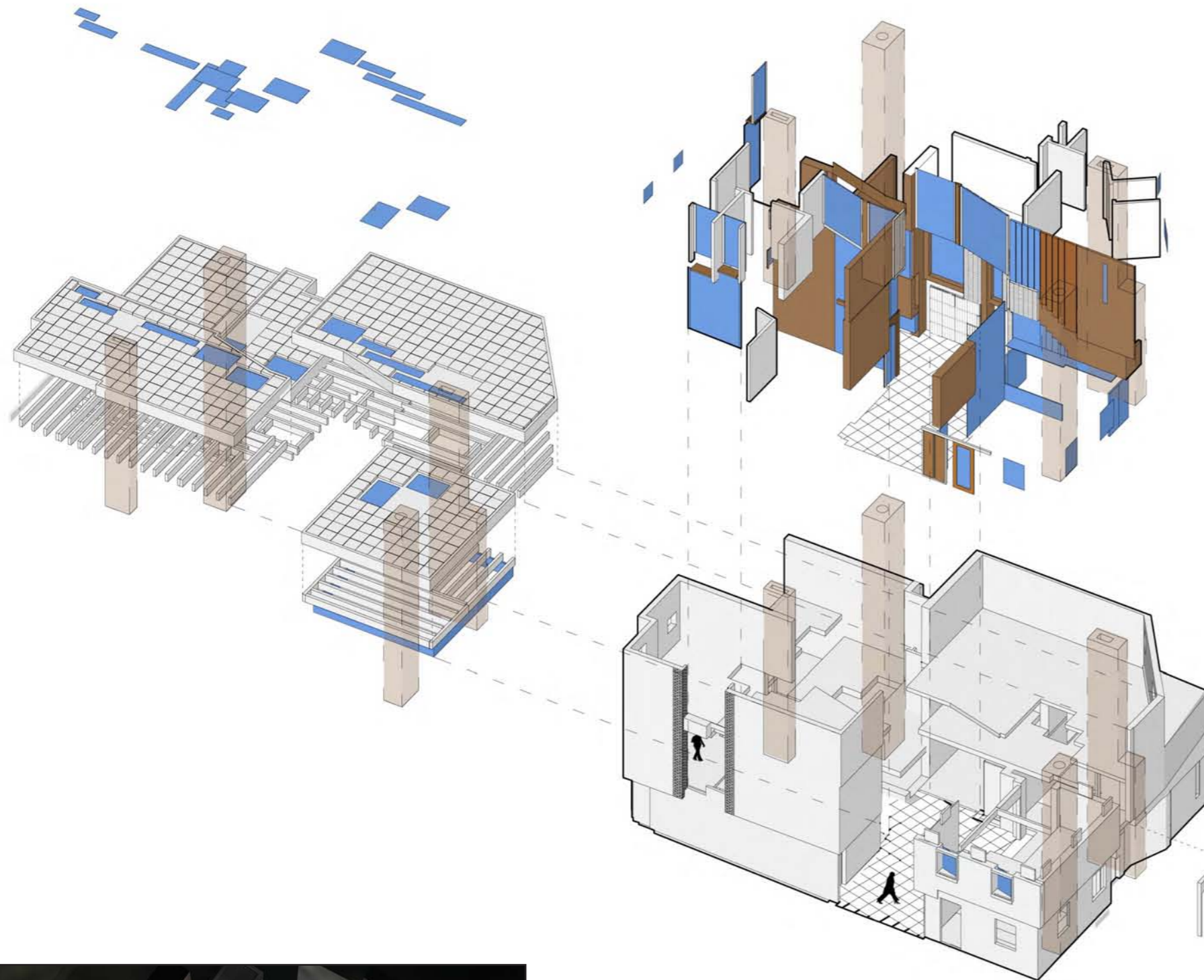


Detail of Stair with heated handrail

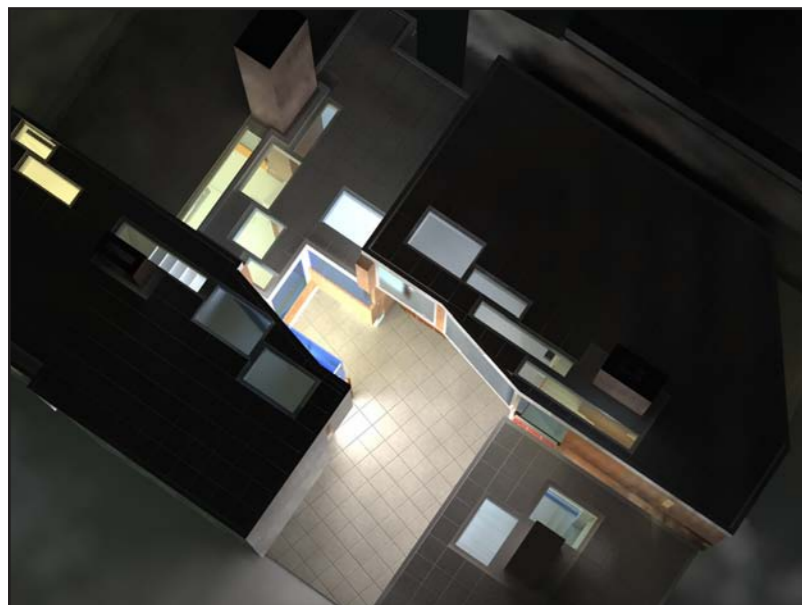
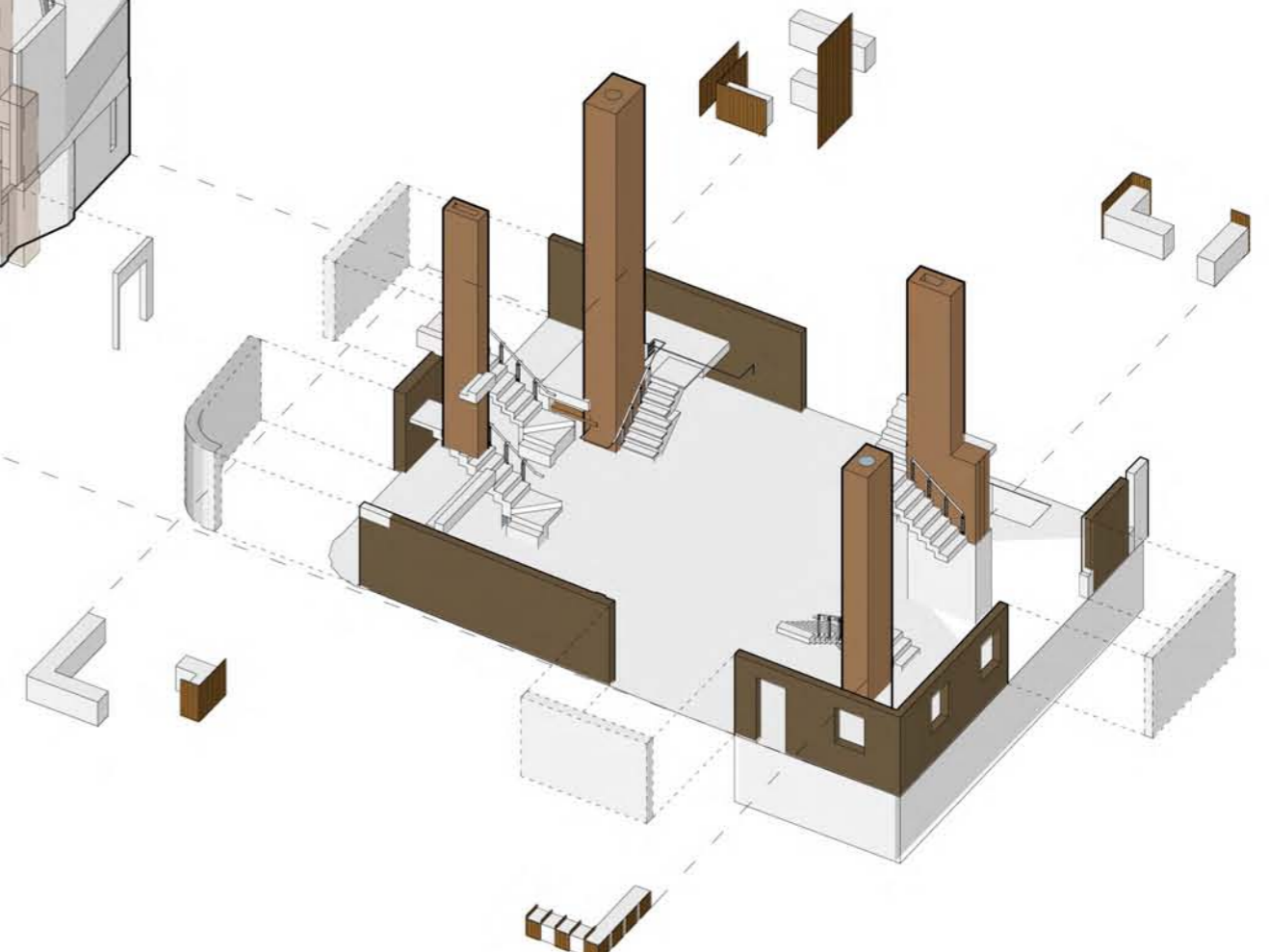
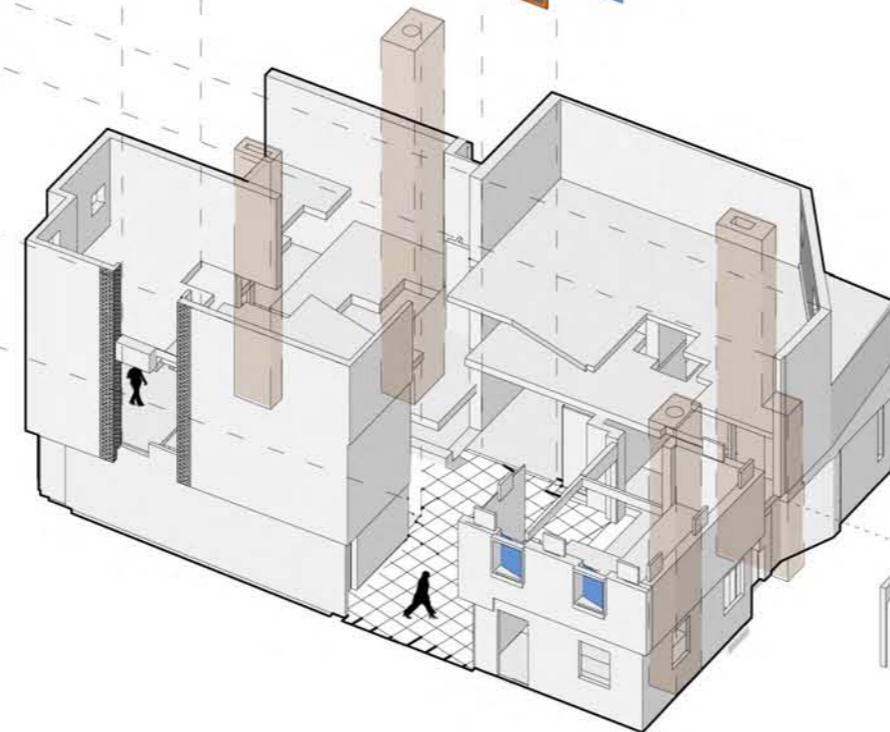


Detailed section of entrance, log-store, fireplace, stair and chimney

Fireside Manners



Renders of Bakery



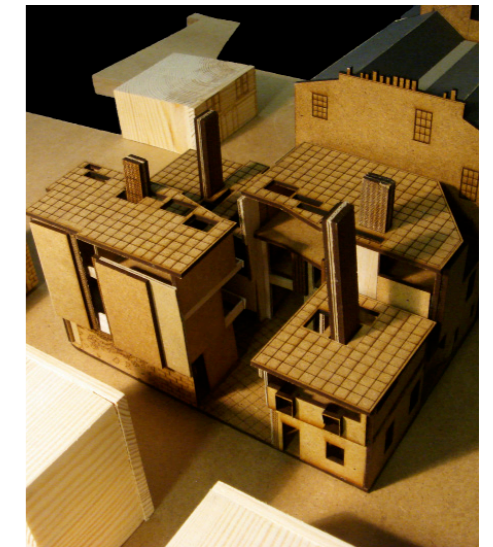
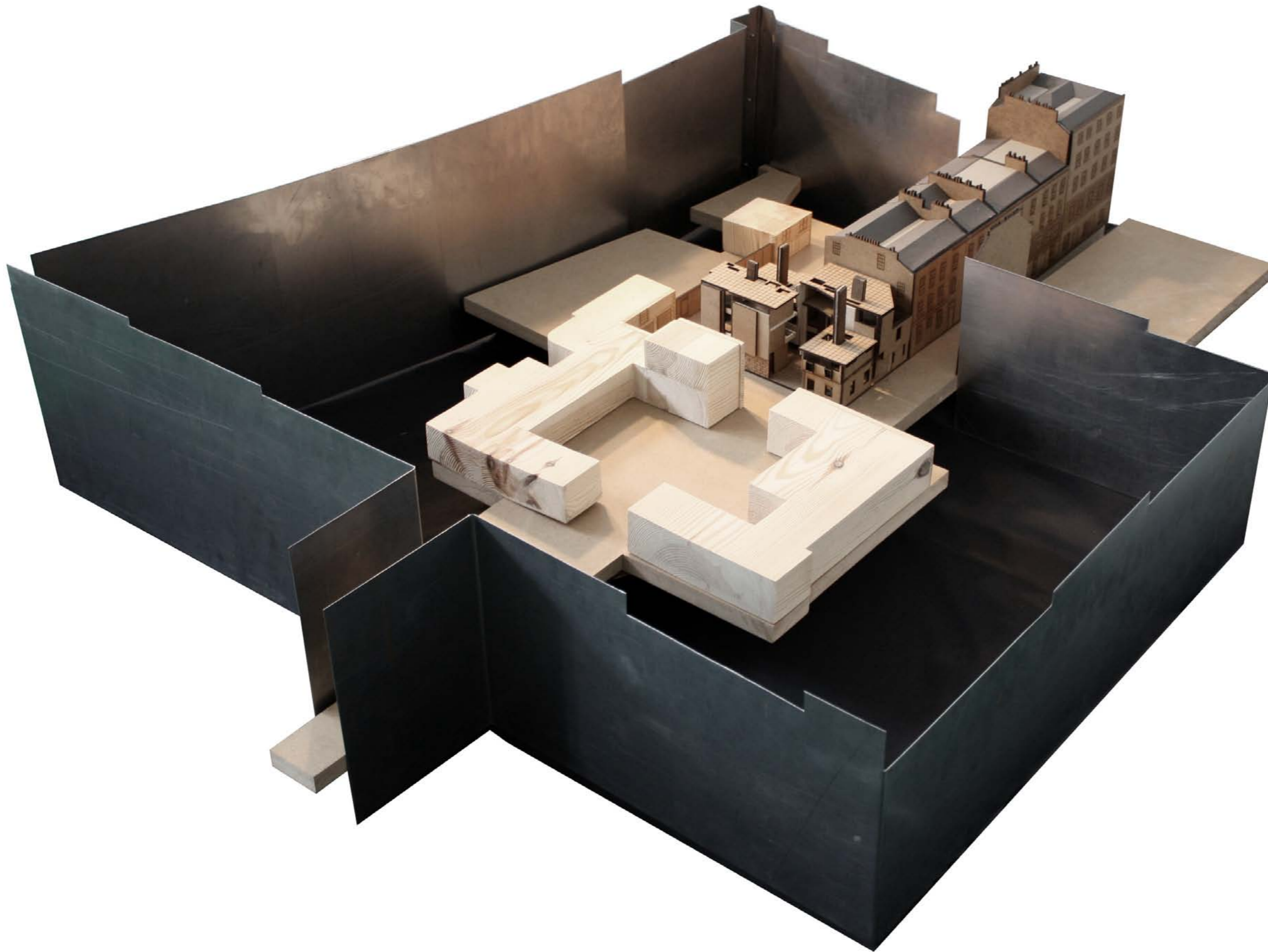
Courtyard at Night

Axonometric showing rooflights, roof, perimeter walls, courtyard walls & chimneys

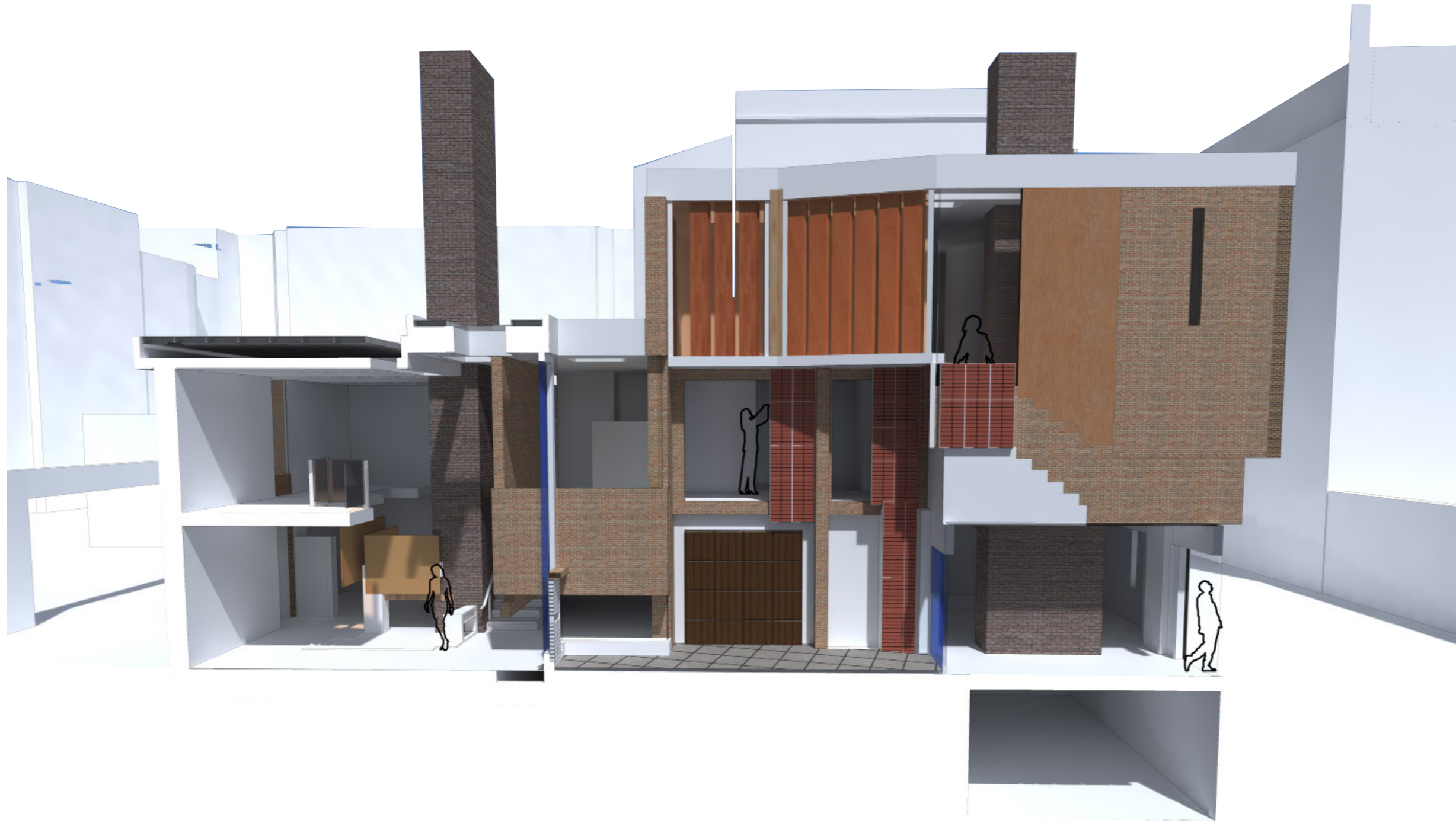
Fireside Manners



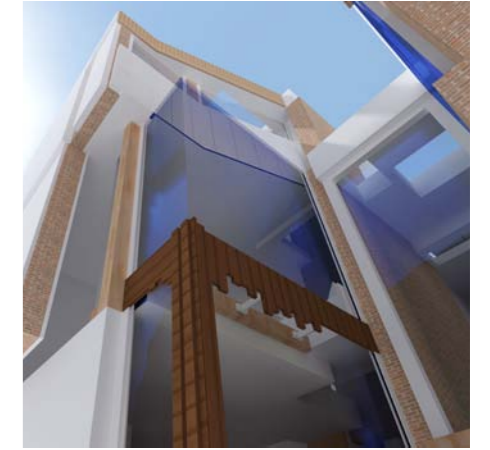
Fireside Manners



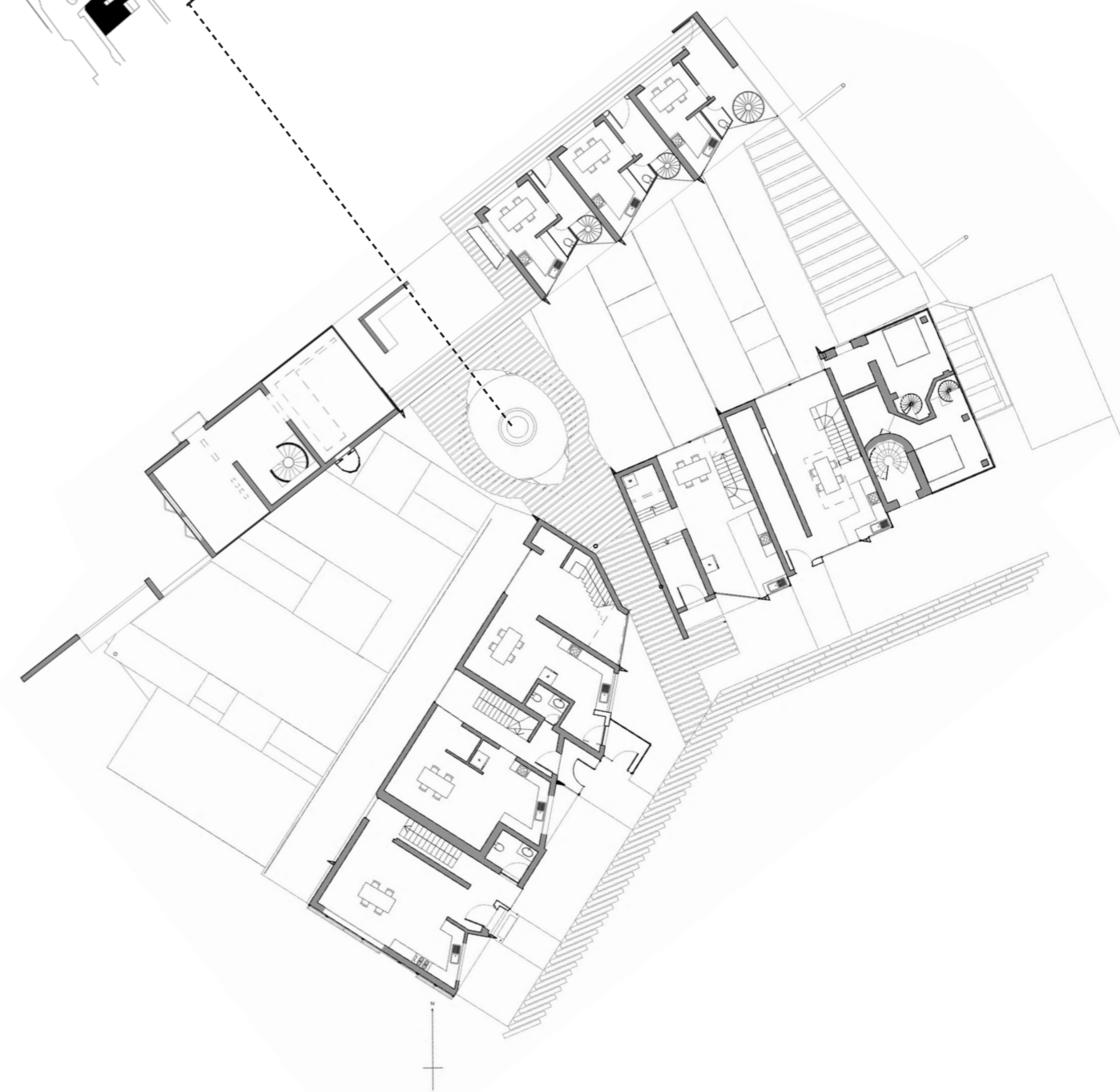
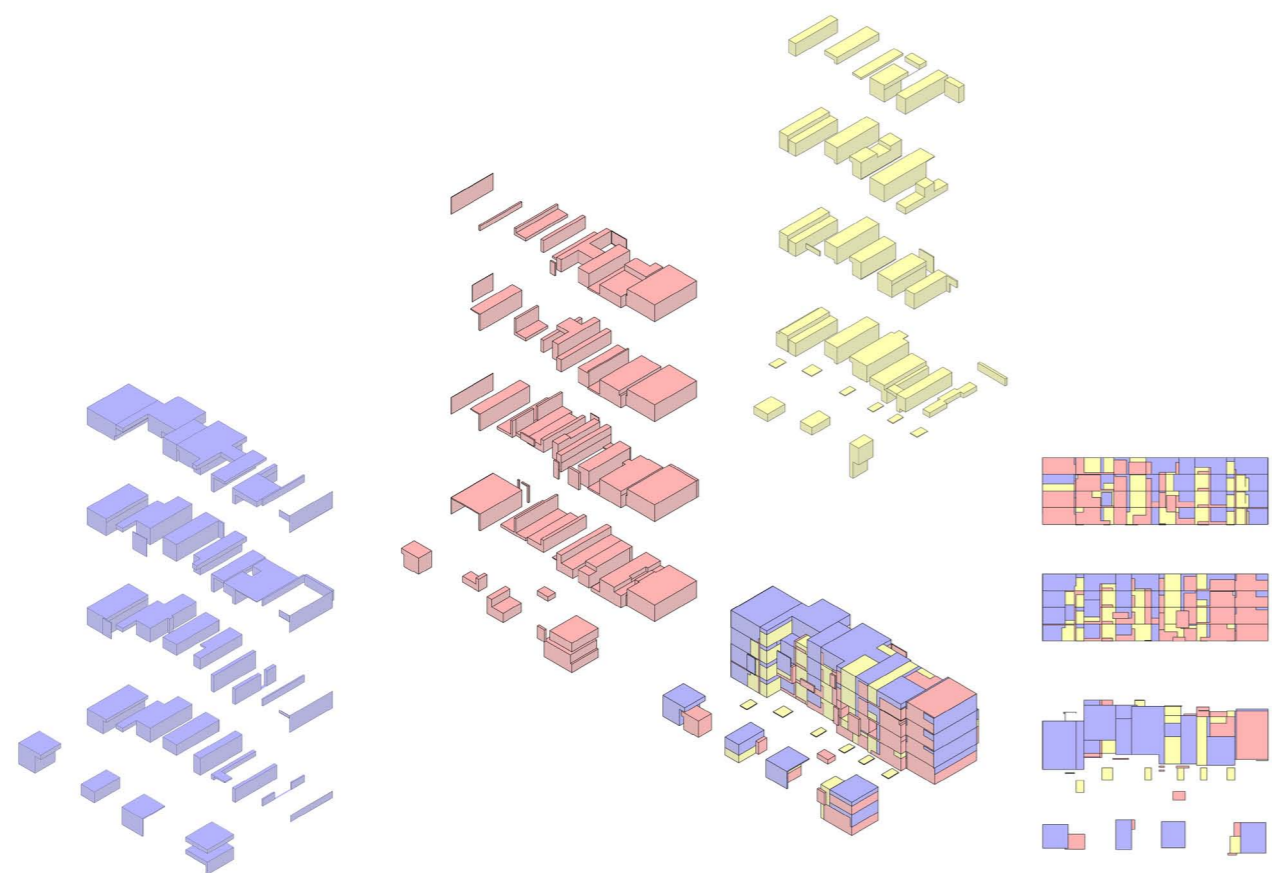
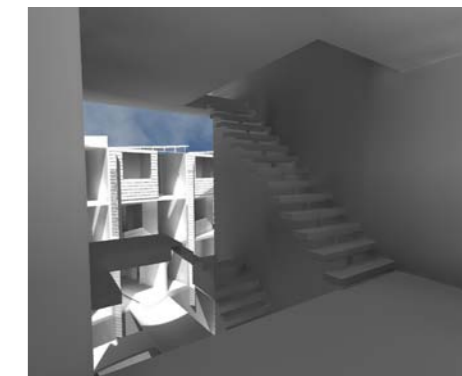
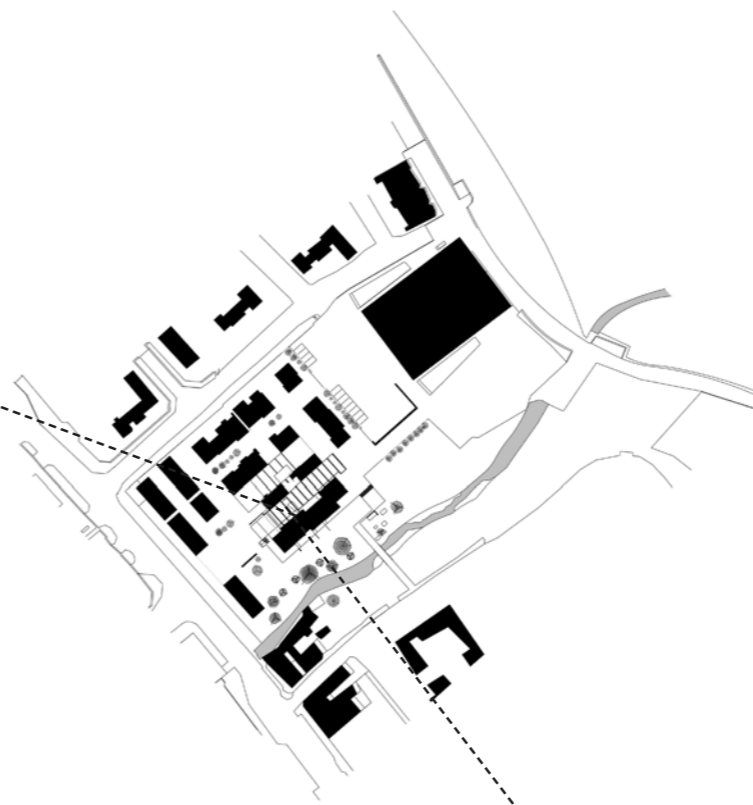
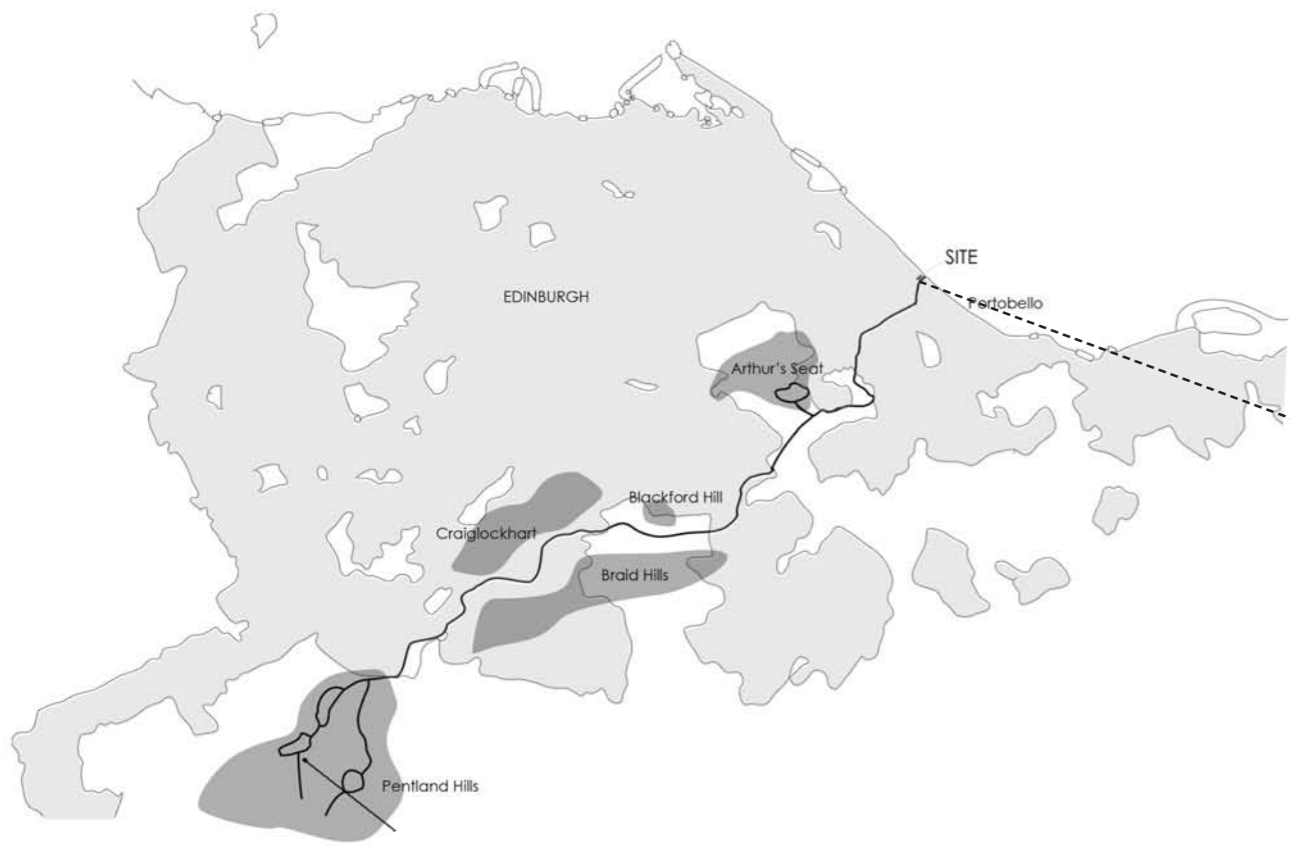
Fireside Manners



Section of Courtyard



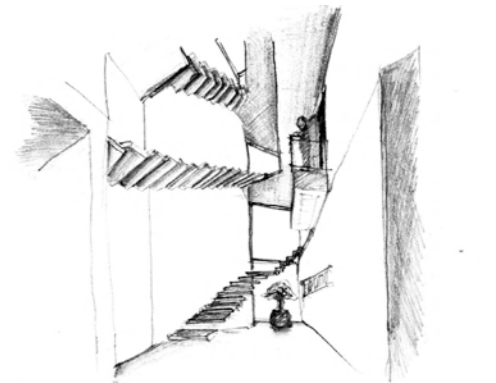
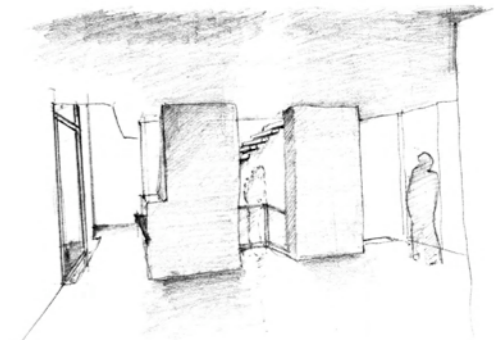
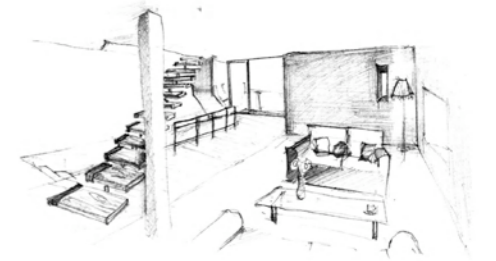
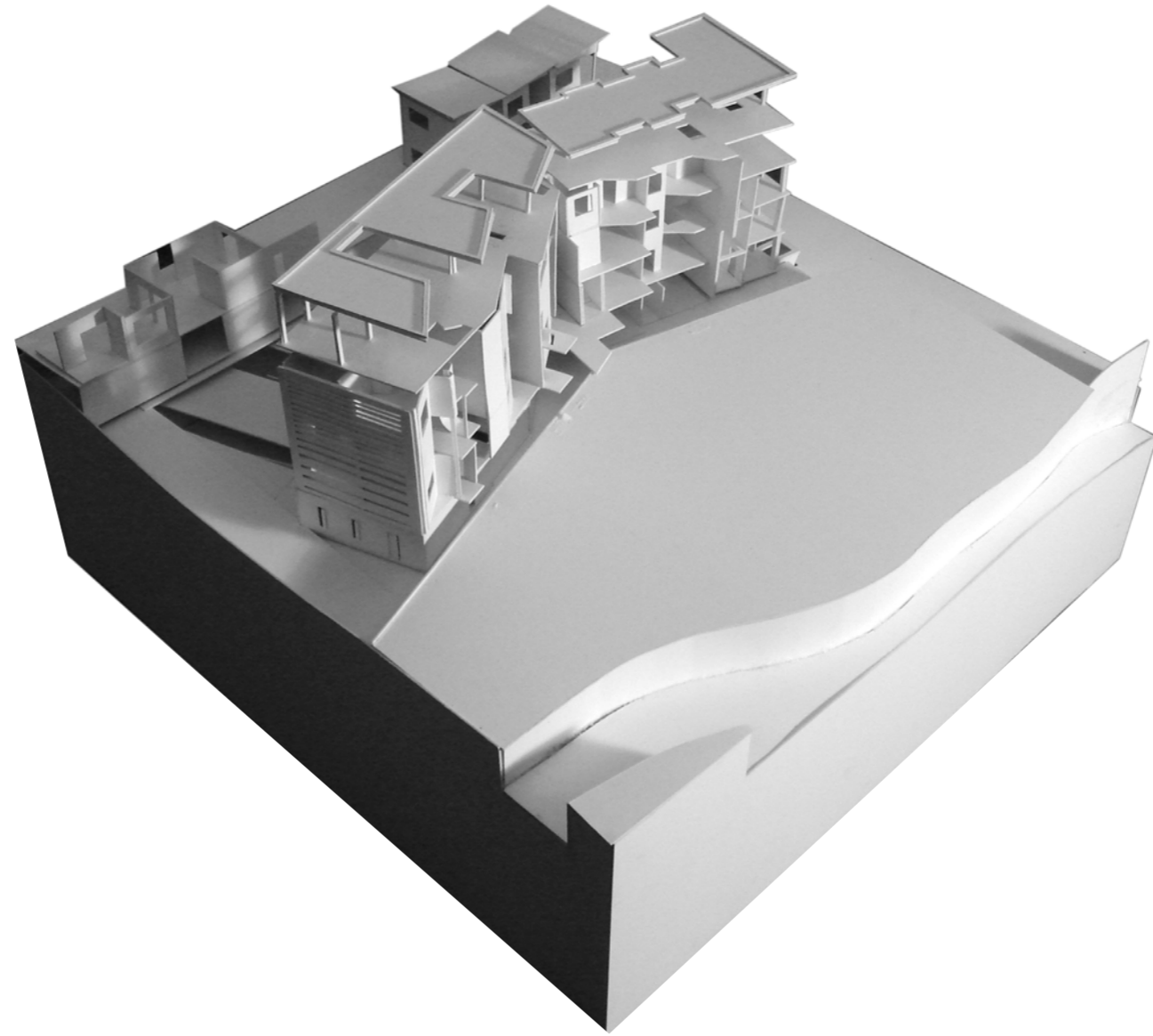
Interior Renders of Dwellings



Wayfaring Water

Residential Development
Portobello, Edinburgh

Wayfaring Water



Wayfaring Water

